



SUKOON THE CAFE

SPECIALTY COFFEE | ITALIAN | CHINESE





SANDWICHES

Cheese Corn Sandwich	120
Veg Sandwich	120
Peri Peri Sandwich ☆	140
Fiery Paneer Sandwich	150
Mexican Sandwich	150
Sukoon's Ghar Jaisa Sandwich ☆	160



FRESH DOUGH PIZZA [HAND TOSSED]



Classic Margherita Pizza	180
Double Cheese Margherita ☆	200
Farm Fresh Pizza ☆	220
Golden Corn Pizza	200
Spicy Mushroom Pizza ☆	240
Paneer Tandoori Pizza	260
Peri Peri Paneer Pizza ☆	270
ADD ONN	
Cheese Burst	60



CHINESE

Crispy Corn	150
Chilly Potato	170
Manchurian	170
Paneer Chilly ☆	230
Mushroom 65	250



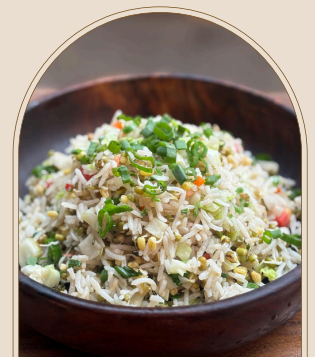
NOODLES



Veg Hakka Noodles	160
Chilly Garlic Noodles	180
Burnt Garlic Noodles ☆	190
Kolkata Street Chowmein ☆	200

FRIED RICE

Schezwan Fried Rice	140
Shangai Fried Rice ☆	160
Paneer Manchurian Rice	200





BURGER

Veg Cheese Burger	140
Tandoori Burger ☆	150
Cheese Paneer Patty Burger	170
Veg Maharaja Burger	190



WRAPS



Corn N Cheese Wrap	130
Cheese Paneer Melt Wrap ☆	150
Paneer Chilly Wrap	170

FRIES

Salted Fries	120
Peri Peri Fries ☆	140
Cheesy Peri Peri Fries	160



NACHOS



Cheesy Nachos	180
Loaded Nachos ☆	200
Add Onn Extra Salsa	50



GARLIC BREADS & TOAST

Cheese Garlic Bread Sticks	160
Butter Paneer Bread Sticks ☆	190
Cheese Chilly Toast	220
Creamy Mushroom Toast ☆	240



PASTA



Alfredo White Sauce Pasta	190
Arrabiata Red Pasta	190
Italian Pink Sauce Pasta ☆	200
Alfredo Spaghetti	200
Aglione E Olio Spaghetti ☆	220

MAGGIE

Double Masala Maggie	100
Veg Maggie	120
Peri Peri Maggie	150
Punjabi Tadka Maggie	160
Sukoon's Ghar Jaisi Maggie ☆	170
ADD ONN-	
Cheese	30





WAFFLES

Kitkat Waffle	170
Nutella Waffle ☆	180
Belgian Chocolate Waffle ☆	200
Brownie Nutella Waffle	200
Lotus Biscoff Waffle ☆	220



BROWNIE , LAVA & TOAST

Fudge Brownie	120
Brownie with Ice cream ☆	150
Choco Lava ☆	100
Choco Lava with Ice Cream	140
Nutella Toast ☆	190
Ferrero Rocher Toast ☆	220

HOT CHOCOLATE

Sukoon's Hot Chocolate	140
Nutella Hot Chocolate ☆	160
Hot Chocolate with Brownie	180



TIRAMISU

Classic Tiramisu ☆	280
Biscoff Tiramisu ☆	350



CLASSICS

Espresso [30ml/60ml]	80/100
Cafe Latte	110
Americano ☆	110
Cappuccino ☆	130
Cafe Mocha	150
Macchiato	150
Flat White	160
ADD ONN :- Hazelnut / Caramel/Vanilla/Tiramisu/ Irish	50



SPECIALS



Spanish Latte ☆	190
Matcha Latte ☆	180
Aerocano	150
Coconut Aerocano ☆	200
Espresso Cola	190
Honey Lime Tonic Espresso	210

AFFOGATO

Classic Affogato	160
Nutella Affogato ☆	190
Pistachio Affagato	210





COLD COFFEE

Signature Cold Coffee ☆	120
Cold Coffee With Ice Cream	140
Hazelnut Cold Coffee	150
Mocha Cold Coffee	160
Caramel Cold Coffee	150
Nutella Cold Coffee ☆	190
Irish Cold Coffee	180



COLD BREW

Cold Brew Classic	150
Cranberry Cold Brew ☆	200
Orange Cold Brew	200
Pineapple Cold Brew	200
Coconut Cold Brew ☆	200



MANUAL BREWS

V60 Pour Over ☆	230
French Press	150





ICED LATTE

Classic Iced Latte	160
Hazelnut Iced Latte ☆	180
Nutella Iced Latte	200
Caramel Iced Latte	190
Vanilla Iced Latte	180
Mango Iced Latte	200
Ca Phe Sua Da (Vietnamese)	200
Rose Vanilla Iced Latte	220
Tiramisu Cheesecake Iced Latte ☆	250
Rose Cheesecake Iced Latte	250
Sukoon's Special Tiramisu Iced Latte ☆	250
Caramel Popcorn Iced Latte	250
Oreo Iced Latte	250



FRAPPE



Hazelnut Mocha Frappe	180
Brownie Mocha Frappe ☆	200
Double Caffeinated Frappe	200
Tiramisu Frappe ☆	200
Oreo Frappe	200



MATCHA

Classic Matcha	190
Strawberry Matcha ☆	220
Mango Matcha ☆	220
Rose Matcha	240
Passion Fruit Matcha	240
Watermelon Matcha	250
Blueberry Cloud Matcha	250
Hazelnut Cloud Matcha ☆	250



THICK SHAKES



Oreo Blast Shake	160
Kitkat Crunch Shake	160
Nutella Brownie Shake ☆	200
Dark Desire Shake	180
Lotus Biscoff Shake ☆	200
Cadbury Overloaded Shake	200

ICED TEA

Peach Iced Tea ☆	150
Lemon Iced Tea	150

